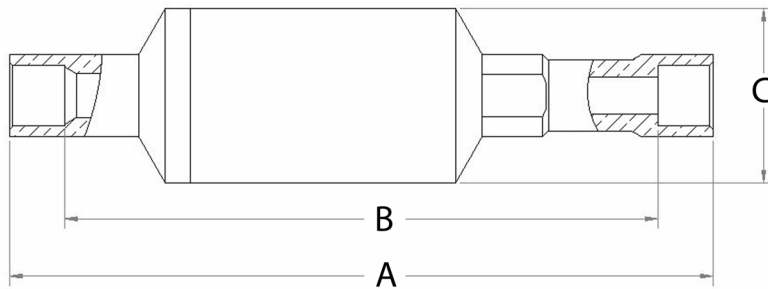



Features:

- Design Pressure (DP) / Maximum abnormal pressure (MAP): 2031 psig, 140 bar
- Continuous operating temperature (COT): -40°F/300°F, -40°C/149°C
- Designed for Transcritical R744 (CO₂) Systems
- cULus listed by UL, Conforms to EU Pressure Equipment Directive and UK Pressure Equipment Regulation
- Enhanced internal design for maximum flow and minimum pressure drop
- Super low internal leak by using unique patented seal design
- Integral body exceeds the most stringent quality standards in the industry



Part Number	Size in	Cv	Kv	A		B		C		Pressure to open (psi)	Wt	
				in	mm	in	mm	in	mm		lb	kg
A 19254	1/4	0.70	0.61	3.68	93	3.00	76	0.93	24	3.2	0.30	0.14
A 19255	1/4	0.70	0.61	3.68	93	3.00	76	0.93	24	0.1	0.30	0.14
A 19245	3/8	1.39	1.20	4.35	110	3.67	93	1.08	27	3.2	0.46	0.21
A 19246	3/8	1.39	1.20	4.35	110	3.67	93	1.08	27	0.1	0.46	0.21
A 19249	1/2	2.44	2.11	4.35	110	3.53	90	1.08	27	3.2	0.45	0.20
A 19250	1/2	2.44	2.11	4.35	110	3.53	90	1.08	27	0.1	0.45	0.20
A 19256	5/8	4.06	3.51	5.20	132	4.20	107	1.38	35	3.2	0.87	0.39
A 19257	5/8	4.06	3.51	5.20	132	4.20	107	1.38	35	0.1	0.86	0.39
A 19258	5/8	5.57	4.82	5.20	132	4.20	107	1.38	35	3.2	0.82	0.37
A 19259	5/8	5.57	4.82	5.20	132	4.20	107	1.38	35	0.1	0.81	0.37
A 19260	3/4	9.69	8.38	6.55	166	5.49	139	1.70	43	3.2	1.51	0.68
A 19261	3/4	9.69	8.38	6.55	166	5.49	139	1.70	43	0.1	0.10	0.05
A 19262	7/8	10.20	8.82	6.55	166	5.49	139	1.70	43	3.2	1.51	0.68
A 19263	7/8	10.20	8.82	6.55	166	5.49	139	1.70	43	0.1	1.51	0.68
A 19264	6 mm	0.67	0.58	3.68	93	3.03	77	0.93	24	3.2	0.46	0.21
A 19265	6 mm	0.67	0.58	3.68	93	3.03	77	0.93	24	0.1	0.31	0.14
A 19266	8 mm	1.16	1.00	3.68	93	3.00	76	0.93	24	3.2	0.31	0.14
A 19267	8 mm	1.16	1.00	3.68	93	3.00	76	0.93	24	0.1	0.32	0.15
A 19268	10 mm	1.39	1.20	4.35	110	3.63	92	1.08	27	3.2	0.32	0.15
A 19269	10 mm	1.39	1.20	4.35	110	3.63	92	1.08	27	0.1	0.46	0.21