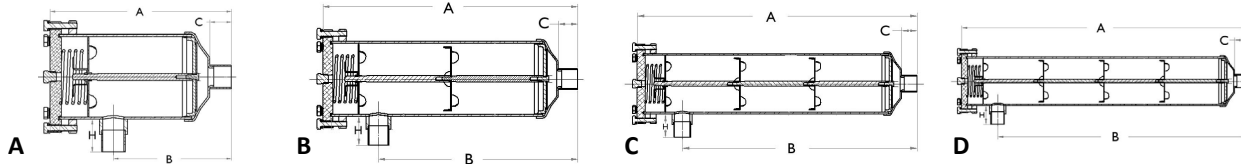


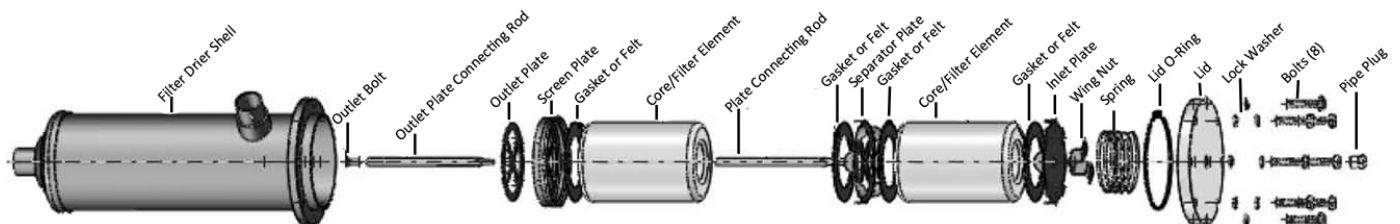


Características:

- Para usar en líneas de líquido o de succión
- Compatible con todos los refrigerantes y aceites CFC, HCFC y HFC
- La capa de polvo resiste 500 horas de rociado de Sal por ASTM B 117
- Clasificación de presión de 870 psi (60 bar)
- UL/CUL enumeró, CE certificado y RoHS obediente
- Cubierta de aluminio acanalada para facilidad de ensamblaje
- Pernos de acero inoxidable y tapones de latón
- Junta selladora para fácil ensamblaje y remoción
- Temperatura de trabajo máxima: 160° F, 70° C



Número de parte	Modelo	Tamaño (in)	Núcleo Tamaño Cu In	A (in)	B (in)	C (in)	H (in)	Peso (lb)	Dibujo	Capacidad de líquido (toneladas)					Espaciado recomendado para la separación para instalar los componentes (in)
										R134a	R404A	R507	R22/R407C	R410A	
A 18583		5/8	48	9.33	5.98	0.87	1.46	8.51	A	22.0	16.0	16.0	23.10	23.6	9.0
A 18584		7/8	48	9.53	6.18	1.06	1.65	8.57	A	37.3	26.7	26.0	39.4	40.0	9.0
A 18585		1 1/8	48	9.61	6.26	1.14	1.73	8.64	A	52.8	37.9	37.0	56.20	57.0	9.0
A 18586		1 3/8	48	9.72	6.38	1.26	1.85	8.77	A	73.1	52.3	52.0	77.4	78.6	9.0
A 18587		1 5/8	48	9.80	6.46	1.34	1.93	8.80	A	83.9	60.7	60.0	89.8	91.4	9.0
A 18588		2 1/8	48	10.08	6.34	1.65	2.24	9.14	A	124.1	92.6	90.0	131.3	137.3	9.0
A 18664		2 5/8	48	10.30	6.24	2.17	2.36	11.46	A	91.5	67.0	65.0	95.6	99.1	9.0
A 18589		7/8	96	15.24	11.89	1.06	1.65	11.36	B	38.1	27.2	27.0	40.1	40.6	14.0
A 18590		1 1/8	96	15.32	11.97	1.14	1.73	11.41	B	59.6	43.0	42.0	63.4	64.2	14.0
A 18591		1 3/8	96	15.43	12.09	1.26	1.85	11.31	B	77.1	55.2	54.0	81.9	83.0	14.0
A 18592		1 5/8	96	15.51	12.17	1.34	1.93	11.83	B	93.4	66.9	66.0	99.2	100.9	14.0
A 18593		2 1/8	96	15.75	12.05	1.65	2.24	17.55	B	136.3	99.7	97.0	142.3	147.6	14.0
A 18665		2 5/8	96	16.00	11.95	2.17	2.36	17.55	B						
A 18604		1 1/8	144	20.63	17.28	1.14	1.73	20.08	C	59.3	42.5	42.0	63.2	64.0	19.5
A 18605		1 3/8	144	20.75	17.40	1.26	1.85	14.35	C	84.9	60.6	60.0	90.3	91.6	19.5
A 18606		1 5/8	144	20.83	17.48	1.34	1.93	14.39	C	95.1	68.3	67.0	101	102.6	19.5
A 18607		2 1/8	144	21.10	17.36	1.65	2.24	20.08	C	118.2	85.1	84.0	125.9	128.3	19.5
A 18608		1 3/8	192	26.69	23.35	1.26	1.85	22.60	D	88.4	63.7	63.0	94.2	95.7	25.0
A 18609		1 5/8	192	26.77	23.43	1.34	1.93	17.57	D	102.9	74.4	73.0	110	111.8	25.0
A 18610		2 1/8	192	27.01	23.31	1.65	2.24	17.70	D	128.7	92.3	91.0	136.4	138.8	25.0



Replacement Kits

Includes: Spring, Wing Nut, Inlet Plate, Separator Plate, Plate Connecting Rod, Screen Plate, Outlet Plate, Outlet Plate Connecting Rod, Outlet Bolt

A 18715C - Single Core Carriage

A 18716C - 2 Core Carriage

A 18717C - 3 Core Carriage

A 18718C - 4 Core Carriage

A 18719 - Hardware Kit includes Pipe Plug, 8 Bolts, 8 Washers

A 18734 - Lid O-Ring Kit includes 20 Lid O-Rings