

Features:

Design Pressure (DP) / Maximum abnormal pressure (MAP): 700 psig, 48 bar

Continuous operating temperature (COT): 40°F/300°F, 40°C/149°C

Allows easy replacement of attached relief valves and rupture discs while the system is operative.

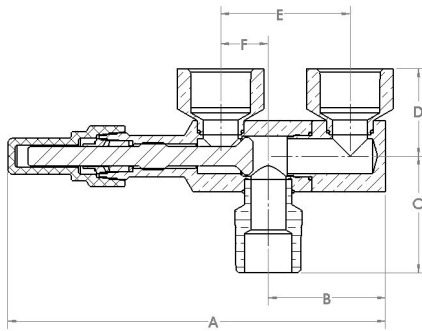
Dual internal seats ensure complete isolation of individual circuits.

Available with various inlet connections.

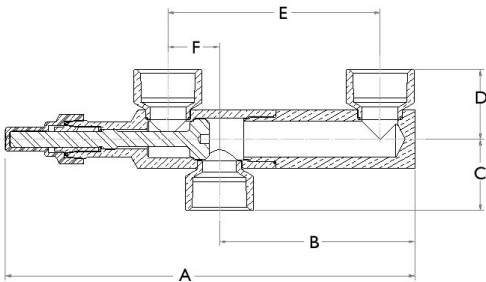
Multiple cap options available.

cRUus Recognized by UL

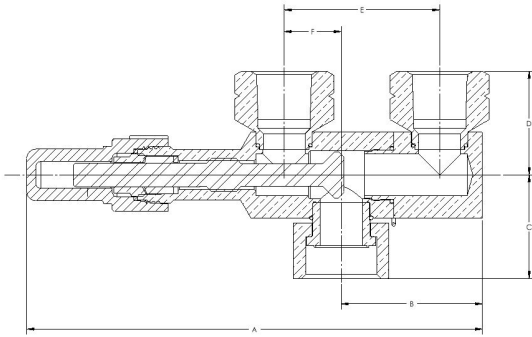
Contact factory or visit website for compatibility with CFC, HCFC, HFC and HFO refrigerants and oils


NPTFE X NPTFI

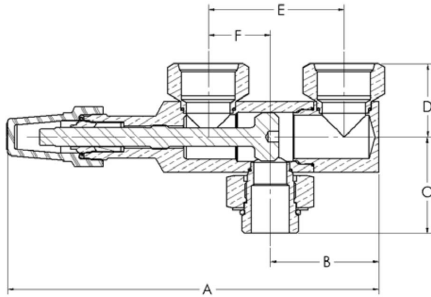
Part Number	Inlet NPTFE	Outlet NPTFI	A		B		C		D		E		F		Torques to Seal				Wt			
			in	mm	in	mm	in	mm	in	mm	in	mm	in	mm	Front Seat (ft-lb)	Back Seat (ft-lb)	Pack Gland (ft-lb)	(N-m)	(N-m)	(ft-lb)	(N-m)	lb
A 17921	1/2	1/2	5.98	152	1.75	44	1.76	35	1.36	35	2.04	52	0.75	19	16 - 18	22 - 24	16 - 18	22 - 24	8 - 12	11 - 16	1.47	0.66
A 17922	3/4	3/4	6.01	153	1.85	47	1.84	35	1.38	35	2.04	52	0.75	19	16 - 18	22 - 24	16 - 18	22 - 24	8 - 12	11 - 16	1.28	0.58
A 17923	1	1	8.51	216	2.44	62	2.39	49	1.94	49	3.13	80	1.70	43	22 - 40	30 - 54	22 - 45	30 - 61	15 - 25	20 - 34	4.55	2.06
A 17924	1 1/4	1 1/4	8.80	224	2.44	62	2.45	54	2.11	54	3.13	80	1.70	43	22 - 40	30 - 54	22 - 45	30 - 61	15 - 25	20 - 34	5.60	2.54


NPTFI X NPTFI

Part Number	Inlet NPTFE	Outlet NPTFI	A		B		C		D		E		F		Torques to Seal				Wt			
			in	mm	in	mm	in	mm	in	mm	in	mm	in	mm	Front Seat (ft-lb)	Back Seat (ft-lb)	Pack Gland (ft-lb)	(N-m)	(N-m)	(ft-lb)	(N-m)	lb
B 35273	1 1/4	1 1/4	11.34	288	5.41	137	1.94	50	1.97	50	5.88	149	1.43	36	22 - 40	30 - 54	22 - 45	30 - 61	15 - 25	20 - 34	6.00	2.72


ROTOLOCK X NPTFI

Part Number	Inlet	Outlet	A		B		C		D		E		F		Torques to Seal						Wt	
			in	mm	in	mm	in	mm	in	mm	in	mm	in	mm	Front Seat	Back Seat	Pack Gland	lb	kg			
B 34767	1-14UNS 2B	1/2 NPTFI	5.98	152	1.85	47	1.36	35	1.36	35	2.04	52	0.75	19	16 - 18	22 - 24	16 - 18	22 - 24	8 - 12	11 - 16	1.02	0.46


STRAIGHT THREAD

Part Number	Inlet	Outlet	A		B		C		D		E		F		Torques to Seal						Wt	
			in	mm	in	mm	in	mm	in	mm	in	mm	in	mm	Front Seat	Back Seat	Pack Gland	lb	kg			
B 34550	7/8-14UNF 2A	7/8-14UNF 2B	5.98	152	1.85	47	1.65	35	1.38	35	2.04	52	0.75	19	16 - 18	22 - 24	16 - 18	22 - 24	8 - 12	11 - 16	1.46	0.66
B 34559	1 5/16-12UNF 2A	1 5/16-12UNF 2B	8.53	217	2.50	64	2.22	43	1.69	43	3.13	80	1.43	36	22 - 40	30 - 54	22 - 45	30 - 61	15 - 25	20 - 34	3.14	1.42
B 34654	1 5/8-12UNF 2A	1 5/8-12UNF 2B	8.53	217	2.50	64	2.19	46	1.81	46	3.13	80	1.43	36	22 - 40	30 - 54	22 - 45	30 - 61	15 - 25	20 - 34	3.64	1.65