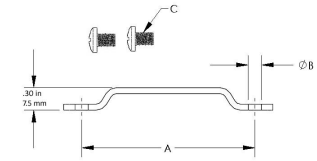


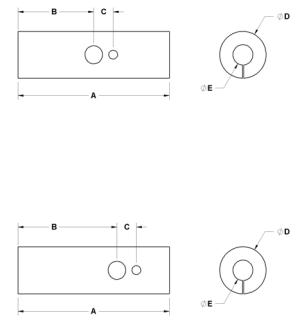
**Bracket Kits**

Part Number	Valve Size	A		B		Screw Thread Size (C)	Wt	
		(in)	(mm)	(in)	(mm)		(lb)	(kg)
B 35531	1/4 - 5/8	2.28	58	0.17	4.4	M4 X .07	0.03	0.02
B 35532	3/4 - 7/8	2.84	72	0.17	4.4	M4 X .07	0.03	0.02
B 35533	1 1/8	3.07	78	0.17	4.4	M4 X .07	0.04	0.02
B 35534	1 3/8	3.62	92	0.25	6.4	M6 X 1.0	0.05	0.02
B 35535	1 5/8	3.94	100	0.25	6.4	M6 X 1.0	0.05	0.02
B 35536	2 1/8	4.80	122	0.25	6.4	M6 X 1.0	0.06	0.02



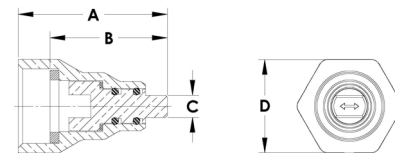
**Insulation Cover**

Insulation	Valve Size	A (in)	B (in)	C (in)	D (in)	E (in)	Thickness (in)	Wt(lb)
38RBVINS	3/8	5.50	3.00	0.63	2.50	1.19	0.50	0.10
12RBVINS	1/2	6.38	3.44	0.63	2.50	1.19	0.50	0.10
58RBVINS	5/8	6.38	3.44	0.63	2.50	1.38	0.50	0.10
34RBVINS	3/4	7.44	3.88	0.88	3.06	1.63	1.09	0.10
78RBVINS	7/8	7.44	3.88	0.88	3.06	1.63	1.09	0.10
118RBVINS	1 1/8	8.44	4.31	1.13	3.63	1.75	1.25	0.10
138RBVINS	1 3/8	10.00	5.00	1.25	3.94	2.06	1.35	0.10
158RBVINS	1 5/8	11.00	5.50	1.44	4.56	2.25	1.56	0.32
218RBVINS	2 1/8	12.00	6.06	1.88	5.38	2.44	1.75	0.10
258RBVINS	2 5/8	13.50	6.81	2.25	6.25	2.88	2.00	0.82
MSBVINS	Holes Offset	8.56	6.56	1.10	2.63	1.13	0.75	0.10
MSBVINSCEN	Holes Centered	8.56	4.28	1.10	2.63	1.13	0.75	0.02



**Retrofit Cap**

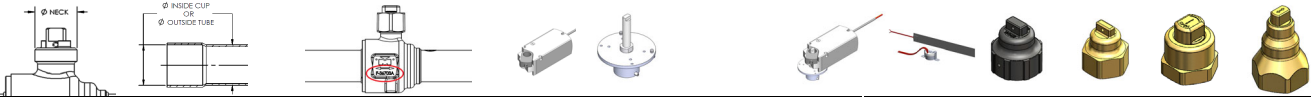
- Designed to replace existing caps on installed valves for the full range of CYCLEMASTER Ball Valve sizes 1/4" to 3 1/8"
- Large nut secures cap assembly to valve neck allowing center post to easily turn for on/off operation and clear visual identification
- Uses dual o-ring stem seals and base seal to assure positive isolation



Part Number	Valve Configuration	Valve Size in	A		B		C		D		Recommended Sealing Torque		Wt	
			in	mm	in	mm	in	mm	in	mm	ft-lb	N-m	lb	kg
A 18351	Straight	1/4 - 5/8	1.33	34	1.04	26	0.16	4	0.81	21	3 - 4	4 - 5	0.08	0.04
	3-Way	1/4 - 5/8												
A 18352	** Straight	3/4 - 1 1/8	1.50	38	1.18	30	0.22	6	0.94	24	5 - 6	7 - 8	0.12	0.05
	3-Way	3/4 - 7/8												
A 18353	*** Straight	1 3/8 - 1 5/8	1.92	49	1.59	40	0.31	8	1.13	29	13 - 15	18 - 20	0.22	0.10
	3-Way	1 1/8												
A 18354	Straight	2 1/8, 2 5/8 & 3 1/8" Red Port	2.57	65	1.97	50	0.38	10	1.63	41	40 - 45	54 - 61	0.57	0.26
	3-Way	1 3/8 - 2 1/8, 2 5/8 & 3 1/8" Red Port												
A 18355	* Straight	2 5/8 & 3 1/8 Full Port	2.66	68	2.10	53	0.38	10	1.88	48	45 - 50	61 - 68	0.84	0.38
	3-Way													

Valve sizes listed are based on current standard product offering. Confirm part number requirement based on thread size.

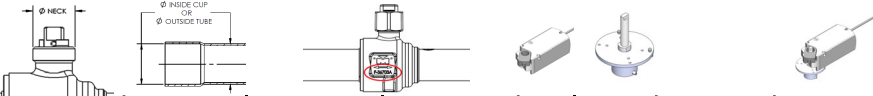
**Ball Valve and Standard Actuated Ball Valve Components**



Stem Neck Thread Size	Connection Size (in)	Straight Body No.	3-Way Body No.	Motor Series	ABV Hub Kit	ABV Enclosure Kit	ABV Hub/ Motor Kit	Heater	Replacement Caps			
									1 Piece Plastic	1 Piece Brass	2 Piece Brass	Retrofit Brass
11/16"-16 UN	1/4	N 02351	---	1	A 18389	n/a	A 18390	---	---	A 17965	A 17842	A 18351
	3/8	F 35222	F 35222 FN35222									
	1/2	F 36573										
	5/8	F 36700 F 36700A F 36700MHP F 36700XHP F 38000XHP										
13/16"-16 UN	3/4	N 02352	F 35223 FN35223	1	A 18391	n/a	A 18392	---	P 36762	A 17966	A 17843	A 18352
		F 33957										
	F 35223											
7/8	F 36701XHP F 35427 F 35639 F 35223XHP F 36701 F 36701A F 36701AMHP											
1 1/8	F 36702A	---										
1"-16 UN	1 1/8	N 02353	F 35224	2	A 18393	A 18393-KIT2	A 18394	A 18366	P 36763	A 17967	A 17844	A 18353
		F 33958										
		F 35224										
	1 3/8	F 35428 F 35640 F 36702	---									
	1 5/8	F 35949 F 36703 F 36703A	---									
	1 1/8	F 36704A	---									
	1 3/8	F 35224XHP F 36702XHP	FN35224									
1 5/8	F 36703XHP	---		A 19234	A 19234-KIT2	A 19235						
1 1/2"-16 UN	1 3/8	N 02354 F 35429 F 35641	F 35162	2	A 18368	A 18368-KIT2	A 18396	A 18366	P 36764	A 17968	A 17845	A 18354
1 5/8	N 02355 F 35430 F 35642 F 35950 F 36704	---										
1 1/2"-16 UN	2 1/8	F 35951	F 36595	3	A 18368	A 18368-KIT3	A 18395	A 18367				
	2 5/8 Red Port	F 36451										
	3 1/8 Red Port	F 36705 F 36705A										
	2 5/8 Full Port	F 36706A	---	4	A 18764 A 18764XHP	A 18764-KIT4	A 18765 A 18765XHP	A 18367 (2)				
2 1/8	F 36705XHP	---										
1 3/4"-16 UN	2 1/8	N 02356	F 35161	3	A 18402	A 18402-KIT3	---	A 18367				
	2 5/8 Red Port	F 35111										
	3 1/8 Red Port	F 35755 F 36452 F 36706										
	2 5/8 Full Port	F 35952 F 36322	---	4	A 18400	A 18400-KIT4	A 18401	A 18367 (2)			A 17846	A 18355
3 1/8 Full Port	F 36707											
3 5/8, 4 1/8												


Note: "SS" Suffix on body designates stainless steel tubes.

## Ball Valve and Spring Return Actuated Ball Valve Components



Stem Neck Thread Size	Connection Size (in)	Straight Body No.	3-Way Body No.	Motor Series	ABV Hub Kit	ABV Enclosure Kit	ABV Hub/Motor Kit
11/16"-16 UN	1/4	F 36700 F 36700A	---	1R	A 19089	---	A 19090
	3/8						
	1/2						
	5/8						
13/16"-16 UN	3/4	F 36701 F 36701A	---	1R	A 19091	---	A 19092
	7/8						
	1 1/8						
1"-16 UN	1 3/8	F 36703 F 36703A	---	3R	A 19234	A 19234-KIT3	A 19251
	1 5/8						
1-1/2"-16 UN	2 1/8	F 36705 F 36705A	---	4R	A 19239	---	A 19240
	2 5/8 Red Port						
	3 1/8 Red Port						

## Transcritical 140 bar Ball Valve and Spring Return Actuated Ball Valve Components



Stem Neck Thread Size	Connection Size (in)	Straight Body No.	3-Way Body No.	Motor Series	ABV Hub Kit	ABV Enclosure Kit	ABV Hub/Motor Kit	Heater
11/16"-16 UN	1/4	F 36700XHP F 38000XHP	---	1R	A 19089	---	A 19090	---
	3/8							
	1/2							
	5/8							
13/16"-16 UN	3/4	F 35223XHP F 36701XHP	---	2R	A 19237	---	A 19238	---
	7/8							
1"-16 UN	1 1/8	F 35224XHP F 36702XHP	---	3R	A 19234	A 19234-KIT3	A 19251	A 18366

## Actuators

Motor Series	1	2	3	4
Standard Actuator	P 36408	P 36409	P 36410	P 36714 P 36714
Actuator with Auxillary Switch	P 36417	P 36418	P 36419	P 36889 P 36714
Hub Seal Kits	A 18403 (1 Seal)	A 18404 (2 Seals)	A 18404 (2 Seals)	A 18404 (2 Seals)
Motor Series	1R	2R	3R	4R
Spring Return Actuator	P 37907	P 37908	P 37909	P 37910
Motor Series	1M	2M	3M	4M
Modulating Actuator	P 37795	P 37796	P 36714	P 36714 P 36714
Modulating Actuator with Auxillary Switch				P 36889 P 36714

Views shown without Hub Kit Bracket Assembly. Hub Seal Kits include seals ONLY.

Note: Series IV motor assemblies require additional mounting hardware to join tandem motors.

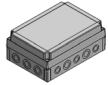
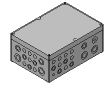
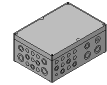
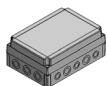
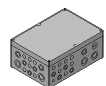
Note: When using a Series 4 motor, a quantity of two P 36714 motors are required per assembly and are sold individually.

### Actuator Shaft Adapter Kits

Motor Series	1		2		3		4	
Shaft Adaptor Kit (1 per box)			P 37736		P 37735		P 37735	
Position Indicator (10 per bag)	P 37732		P 37731		P 37730		P 37730	
Shaft Adapter Clip (20 per bag)			P 37733		P 37734		P 37734	
Shaft Insert (10 per bag)	P 37729							

Shaft Adapter kit includes Shaft Adapter (1), Clip (1), Position Indicator Set (1) and Screws (2).

### Enclosures

Motor Series	1	2	3	4
Standard Enclosure (L x W x H)	Not Available	 10.0" x 7.1" x 4.0"	 14.2" x 10.0" x 6.0"	 14.2" x 10.0" x 6.0"
Motor Series	IR	2R	3R	4R
Spring Return Enclosure (L x W x H)	Not Available	 10.0" x 7.1" x 4.0"	 14.2" x 10.0" x 6.0"	Not Available

ABV Hub kit w/ Enclosure includes all the necessary accessories along with the hub kit to connect the enclosure to the hub.; Ambient Temperature (operation): -25°F to 125°F (-31°C to 51°C); Heater kit for lower temperature applications.

### O Ring Kit for Actuator Hub Service

O-Ring Kits	Valve Size
A 18403	1/2 - 1 1/8
A 18404	1 3/8 - 3 1/8