



# ENGINEERING CHANGE NOTICE

**Date:** 1/25/2011  
**Subject:** NPTF X NPTFI PRV ASSEMBLY

Mueller Refrigeration is announcing an upcoming change that will consolidate part numbers for similar relief valve assemblies to satisfy requirements for higher discharge capacities.

Part number replacements are listed as follows:

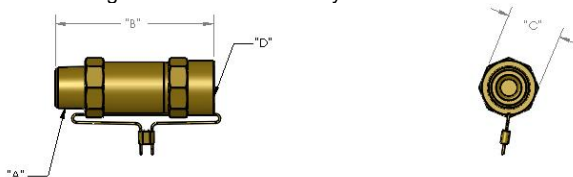
CURRENT PN	DESCRIPTION	NEW PN
A 15506	3/4 NPT x 3/4 FPT PRV, Straight (Specify psi)	A 18358
AD15506	3/4 NPT x 3/4 FPT PRV, Straight 235#	AD18358
AE15506	3/4 NPT x 3/4 FPT PRV, Straight 300#	AE18358
AG15506	3/4 NPT x 3/4 FPT PRV, Straight 350#	AG18358
AH15506	3/4 NPT x 3/4 FPT PRV, Straight 400#	AH18358
AI15506	3/4 NPT x 3/4 FPT PRV, Straight 425#	AI18358
AJ15506	3/4 NPT x 3/4 FPT PRV, Straight 450#	AJ18358
AQ15506	3/4 NPT x 3/4 FPT PRV, Straight 70-249#	AQ18358
AR15506	3/4 NPT x 3/4 FPT PRV, Straight 250-349#	AR18358
AS15506	3/4 NPT x 3/4 FPT PRV, Straight 350-450#	AS18358

ARC15506	3/4 NPT x 3/4 FPT PRV, Straight 220	ARC18358
----------	-------------------------------------	----------

B 34444	7/8 Pressure Relief Valve	A 18540
BD34444	7/8 Pressure Relief Valve @ 235 psi	AD18540
BE34444	7/8 Pressure Relief Valve @ 300 psi	AE18540
BG34444	7/8 Pressure Relief Valve @ 350 psi	AG18540
BH34444	7/8 Pressure Relief Valve @ 400 psi	AH18540
BI34444	7/8 Pressure Relief Valve @ 425 psi	AI18540
BJ34444	7/8 Pressure Relief Valve @ 450 psi	AJ18540
BQ34444	7/8 Pressure Relief Valve	AQ18540
BR34444	7/8 Pressure Relief Valve	AR18540
BS34444	7/8 Pressure Relief Valve	AS18540

BDY34444	7/8 Pressure Relief Valve @ 235 psi	ADY18540
BEY34444	7/8 Pressure Relief Valve @ 300 psi	AEY18540
BGY34444	7/8 Pressure Relief Valve @ 350 psi	AGY18540
BHY34444	7/8 Pressure Relief Valve @ 400 psi	AHY18540
BIY34444	7/8 Pressure Relief Valve @ 425 psi	AIY18540
BJY34444	7/8 Pressure Relief Valve @ 450 psi	AJY18540
BQY34444	7/8 Pressure Relief Valve	AQY18540
BRY34444	7/8 Pressure Relief Valve	ARY18540
BSY34444	7/8 Pressure Relief Valve	ASY18540

Dimensional changes are listed below for your reference.



Assembly #	"A"	"B"	"C"	"D"	Discharge Table
<b>A-18358</b>	<b>3/4" NPTF</b>	<b>3.99</b>	<b>1.38</b>	<b>3/4" NPTF</b>	<b>G</b>
A-15506	3/4" NPTF	4.26	1.69	3/4" NPTF	D
<b>A-18540</b>	<b>7/8" - 14 UNF</b>	<b>3.99</b>	<b>1.38</b>	<b>3/4" NPTF</b>	<b>G</b>
B-34444	7/8" - 14 UNF	4.22	1.69	3/4" NPTF	D

Prefix	PSIG	Discharge Capacity (lb air/min)												
		A	B	C	D	E	F	G	H	I	J	K		
AD	235	4.3	9.1	20.1	33.7	55.9	91.8	39.0					60.6	90.3
AE	300	5.4	11.5	25.4	42.5	70.5	115.8	49.2					76.5	113.9
AG	350	6.3	13.3	29.5	49.3	81.8	134.3	57.1					88.7	132.1
AH	400	7.1	15.2	33.5	56.1	93.0	152.7	64.9					150.3	
AI	425	7.6	16.1	35.6	59.5	98.6	162.0	68.8					159.4	
AJ	450	8.0	17.0	37.6	62.9	104.3	171.2	72.8					168.5	

MUELLER REFRIGERATION LLC  
 (FORM F302 REV 4/03).