



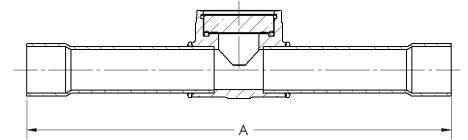
Features:

- Design Pressure (DP) / Maximum abnormal pressure (MAP): Charted Below
- Continuous operating temperature (COT): -40°F/185°F, -40°C/85°C
- Contact factory or visit website for compatibility with CFC, HCFC, HFC and HFO refrigerants and oils
- UL/cUL Recognized, Conforms to EU Pressure Equipment Directive and UK Pressure Equipment Regulation
- Designed for maximum flow and minimum pressure drop
- Large viewing window and indicator for better visibility
- Provides accurate identification of system conditions

Hermetically Sealed, Solder x Solder Extended Tube

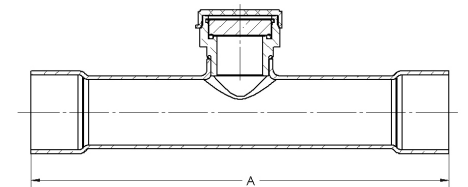
Brass Body

Part Number	Size		A		MAP		Wt	
	in	mm	in	mm	psi	bar	lb	kg
A 18114	1/4	6	5.06	129	775	53	0.31	0.14
A 18115	3/8	10	4.85	123	775	53	0.38	0.17
A 18116	1/2	13	5.75	146	775	53	0.30	0.14
A 18117	5/8	17	5.75	146	775	53	0.52	0.24
A 18118	3/4	19	6.71	170	775	53	0.56	0.25
A 18119	7/8	22	6.71	170	775	53	0.60	0.27



Copper Body

Part Number	Size		A		MAP		Wt	
	in	mm	in	mm	psi	bar	lb	kg
A 18120	1 1/8	29	6.30	160	700	48	0.59	0.27
A 18121	1 3/8	35	7.87	200	700	48	0.75	0.34
A 18122	1 5/8	41	7.87	200	700	48	1.01	0.46
A 18123	2 1/8	54	7.87	200	650	45	1.40	0.64



Moisture Content PPM

HFC and HCFC Refrigerants	75°F Liquid Refrigerant		100°F Liquid Refrigerant	
	Green/Dry	Yellow/Wet	Green/Dry	Yellow/Wet
	R12	5	20	10
R22	30	125	45	185
R134a	25	110	45	175
R404A	20	75	25	130
R407C	30	145	55	230
R410a	25	165	45	300
R502	10	45	20	65
R507	15	75	30	140