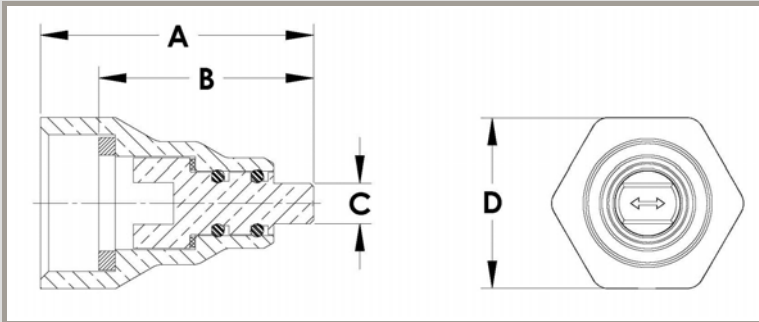




Features:

- Designed to replace existing caps on installed valves for the full range of CYCLEMASTER Ball Valve sizes 1/4" to 3 1/8"
- Large nut secures cap assembly to valve neck allowing center post to easily turn for on/off operation and clear visual identification
- Uses dual o-ring stem seals and base seal to assure positive isolation



Part Number	Valve Configuration	Valve Size in	A		B		C		D		Recommended Sealing Torque		Wt	
			in	mm	in	mm	in	mm	in	mm	ft-lb	N-m	lb	kg
A 18351	Straight	1/4 - 5/8	1.33	34	1.04	26	0.16	4	0.81	21	5 - 6	7 - 8	0.08	0.04
	3-Way	1/4 - 5/8												
A 18352	** Straight	3/4 - 1 1/8	1.50	38	1.18	30	0.22	6	0.94	24	5 - 6	7 - 8	0.12	0.05
	3-Way	3/4 - 7/8												
A 18353	*** Straight	1 3/8 - 1 5/8	1.92	49	1.59	40	0.31	8	1.13	29	13 - 15	18 - 20	0.22	0.10
	3-Way	1 1/8												
A 18354	Straight	2 1/8, 2 5/8 & 3 1/8" Red Port	2.57	65	1.97	50	0.38	10	1.63	41	40 - 45	54 - 61	0.57	0.26
	3-Way	1 3/8 - 2 1/8, 2 5/8 & 3 1/8" Red Port												
A 18355	* Straight	2 5/8 & 3 1/8 Full Port	2.66	68	2.10	53	0.38	10	1.88	48	45 - 50	61 - 68	0.84	0.38
	3-Way													

Valve sizes listed are based on current standard product offering. Confirm part number requirement based on thread size.

- * For use with 2 1/8" and larger 3-Way Ball Valves manufactured prior to Nov. 2006
- ** For use with 1 1/8 Straight valves manufactured after Jun 2010
- *** For use with 1 5/8 straight valves manufactured after Jan 2014