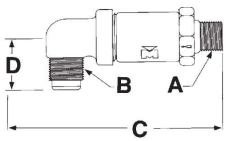




Features:

- Temperature Range: -40°F/300°F, -40°C/149°C
- Designed primarily for use on liquid receiver applications above the liquid refrigerant level (it is recommended that the factory be consulted before the valves are used on other applications)
- Satisfy ASHRAE Standard 15 code requirements for a refrigerant vessel safety device (Application information can also be found in ASHRAE Guide and Data Book)
- Comply with ASME code for unfired pressure vessels
- Discharge rates are certified by National Board of Boiler & Pressure Vessel Inspectors
- Designed for maximum discharge capacities
- Conforms to EU Pressure Equipment Directive and UK Pressure Equipment Regulation, CRN, Compatible with all CFC, HCFC and HFC refrigerants and oils
- CRN OG0314.9C

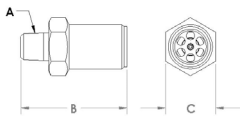
Angle NPTFE to Flare



Part Number *	NPTFE A (in)	Flare Outlet B (in)	C (in)	C (mm)	Wt (lb)	Wt (kg)	Discharge Table	Working Pressure	Competitor Reference
B 33746	1/4	3/8	2.43	62	0.41	0.18	B	150 - 700 psi	526EA 3212C
B 33754	1/4	1/2	2.43	62	0.43	0.19	B	150 - 700 psi	
A 18784	3/8	1/2	4.10	104	1.15	0.52	C	150 - 700 psi	3216C
A 15512	3/8	3/8	2.43	62	0.37	0.17	B	150 - 700 psi	526E 3214C
A 15513	3/8	1/2	2.43	62	0.37	0.17	B	150 - 700 psi	526EB 3215C
A 15514	1/2	5/8	4.10	104	1.02	0.46	C	150 - 700 psi	527E 3220C

* Part Number indicates style and size of relief valve only. Customer must specify pressure setting.

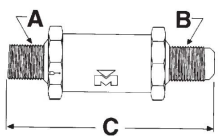
Atmospheric - NPTFE Inlet



Part Number *	NPTFE Inlet A (in)	B (in)	C (in)	C (mm)	Wt (lb)	Wt (kg)	Discharge Table	Working Pressure	Competitor Reference
A 18774	1/8	2.12	1.00	25	0.30	0.14	B	150 - 700 psi	3000C
B 33755	1/4	2.12	1.00	25	0.26	0.12	B	150 - 700 psi	3001C
A 17430	3/8	2.12	1.00	25	0.25	0.11	B	150 - 700 psi	5223 3002C

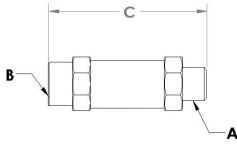
* Part Number indicates style and size of relief valve only. Customer must specify pressure setting.

Straight Thru - NPTFE Inlet to Flare Outlet



Part Number *	NPTFE A (in)	Flare B (in)	C (in)	C (mm)	Wt (lb)	Wt (kg)	Discharge Table	Working Pressure	Competitor Reference
B 33752	1/4	3/8	2.81	71	0.31	0.14	B	150 - 700 psi	5230 3012C
B 33753	1/4	1/2	3.00	76	0.41	0.18	B	150 - 700 psi	
A 15502	3/8	3/8	2.81	71	0.34	0.15	B	150 - 700 psi	5231 3014C
A 15503	3/8	1/2	3.00	76	0.35	0.16	B	150 - 700 psi	5231-A 3015C
A 18737	3/8	5/8	4.20	107	0.98	0.45	C	150 - 700 psi	5233A
A 18783	3/8	1/2	4.20	107	0.95	0.43	C	150 - 700 psi	3016C
A 15504	1/2	5/8	4.20	107	0.84	0.38	C	150 - 700 psi	5232 3020C

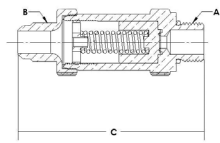
* Part Number indicates style and size of relief valve only. Customer must specify pressure setting.

Straight Thru - NPTFE Inlet to NPTFI Outlet


Part Number *	NPTFE A (in)	NPTFI B (in)	C (in)	C (mm)	Wt (lb)	Wt (kg)	Discharge Table	Working Pressure	Competitor Reference
A 18736	3/8	3/4	4.00	102	0.98	0.45	C	150 - 700 psi	5234A
A 18762	1/2	3/4	4.00	102	0.94	0.43	C	150 - 700 psi	5235A
A 18422	3/4	3/4	4.95	126	1.60	0.73	H	600 - 700 psi	

* Part Number indicates style and size of relief valve only. Customer must specify pressure setting.

** PTFE Seat

Straight Thru - Straight Thread Inlet to Flare Outlet


Part Number *	NPTFE A (in)	NPTFI B (in)	C (in)	C (mm)	Wt (lb)	Wt (kg)	Discharge Table	Working Pressure	Competitor Reference
B 35413	1/8 - 14 UNF - 2	5/8	4.19	106	0.92	0.42	C	150 - 700 psi	

* Part Number indicates style and size of relief valve only. Customer must specify pressure setting.

PSIG	Discharge Capacity (lb air/min)											BAR	Discharge Capacity (kg air/min)										
	A	B	C	D	E	F	G	H	I	J	K		A	B	C	D	E	F	G	H	I	J	K
235	4.3	9.1	20.1	33.7	55.9	91.8	39.0		29.0	60.6	90.3	16	2.0	4.1	9.1	15.3	25.4	41.6	17.7		13.2	27.5	41.0
300	5.4	11.5	25.4	42.5	70.5	115.8	49.2		36.6	76.5	113.9	21	2.4	5.2	11.5	19.3	32.0	52.5	22.3		16.6	34.7	51.7
350	6.3	13.3	29.5	49.3	81.8	134.3	57.1		42.4	88.7	132.1	24	2.9	6.0	13.4	22.4	37.1	60.9	25.9		19.2	40.2	59.9
400	7.1	15.2	33.5	56.1	93.0	152.7	64.9		48.2		150.3	28	3.2	6.9	15.2	25.4	42.2	69.3	29.4		21.9		68.2
425	7.6	16.1	35.6	59.5	98.6	162.0	68.8		51.2		159.4	29	3.4	7.3	16.1	27.0	44.7	73.5	31.2		23.2		72.3
450	8.0	17.0	37.6	62.9	104.3	171.2	72.8		54.1		168.5	31	3.6	7.7	17.1	28.5	47.3	77.7	33.0		24.5		76.4
500		18.8	41.6									34		8.5	18.9								
550		20.7	45.6									38		9.4	20.7								
600		22.5	49.7					88.9				41		10.2	22.5					40.3			
650		24.3	53.7					96.2				45		11.0	24.4					43.6			
700		26.2	57.8					103.4				48		11.9	26.2					46.9			