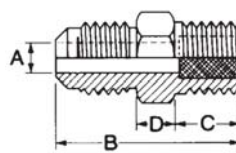
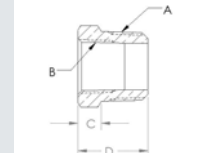


Fusible Pipe Plugs - NPTFE



Half Union - Flare to NPTFE



Bushing NPT to NPTFI

Fusible Pipe Plugs - NPTFE

Cat Number	Part Number UL	Part Number CE	Size NPTFE	Hex	Flare	A (in)	B (in)	C (in)	D (in)	Melting Temp °F	Box Qty	Wt(lb)
FP-A	A 14058	B 35133	1/8	7/16		0.22	0.59			283	10	0.022
FP-B	A 14059	B 35134	1/4	9/16		0.25	0.78			283	15	0.050
FP-C	A 14060	B 35135	3/8	11/16		0.38	0.84			283	15	0.084
FP-A	A 14017	B 35122	1/8	7/16		0.22	0.59			210	10	0.024
FP-B	A 14018	B 35123	1/4	9/16		0.25	0.78			210	15	0.054
FP-C	A 14021	B 35125	3/8	11/16		0.38	0.84			210	15	0.090
FP-A	A 15214		1/8	7/16		0.22	0.59			168	10	0.024
FP-B	A 14019	B 35124	1/4	9/16		0.25	0.78			168	15	0.054
FP-C	A 14022	B 35126	3/8	11/16		0.38	0.84			168	15	0.095

Half Union - Flare to NPTFE

Cat Number	Part Number UL	Part Number CE	Size NPTFE	Hex	Flare	A (in)	B (in)	C (in)	D (in)	Melting Temp °F	Box Qty	Wt(lb)
FU-4B	A 14062		1/4	9/16	1/4	0.19	1.25	0.56	0.19	283	10	0.065
FU-6C	A 14064		3/8	11/16	3/8	0.28	1.44	0.56	0.25	283	10	0.126
FU-4B	A 14023		1/4	9/16	1/4	0.19	1.25	0.56	0.19	210	10	0.057
FU-6C	A 14026		3/8	11/16	3/8	0.28	1.44	0.56	0.25	210	10	0.122
FU-4B	A 14024		1/4	9/16	1/4	0.19	1.25	0.56	0.19	168	10	0.048
FU-6C	A 14027		3/8	11/16	3/8	0.28	1.44	0.56	0.25	168	10	0.098

Bushing - NPT to NPTFI

Cat Number	Part Number	NPTE A (in)	NPTFI B (in)	C (in)	D (in)	Hex	Box Qty	Wt(lb)
R1-AB	A 08756	1/8	1/4	0.61	0.92	11/16	25	0.054
R1-BA	A 00630	1/4	1/8	0.19	0.69	9/16	25	0.020
R1-CB	A 00631	3/8	1/4	0.25	0.75	11/16	25	0.034
R1-DB	A 00492	1/2	1/4	0.28	0.84	7/8	25	0.080
R1-DC	A 00632	1/2	3/8	0.28	0.84	7/8	25	0.051
R1-EC	A 00493	3/4	3/8	0.31	0.92	1 1/16	10	0.111
R1-ED	A 00633	3/4	1/2	0.31	0.92	1 1/16	10	0.092