



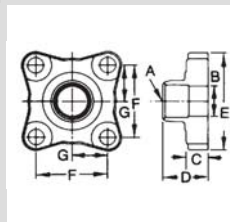
**Flange with Flat Gasket Surface
Compatible with Gasket A 08628**



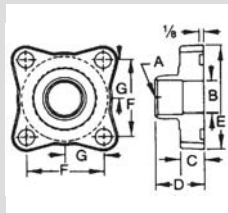
**Flange with Groove
Compatible with Gasket A 08634**



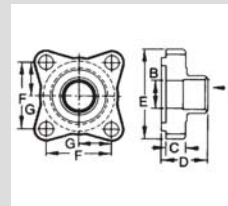
Flat Surface Gasket, A 08628



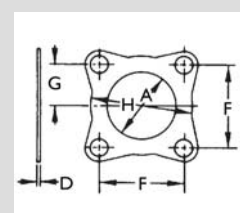
**4 Bolt, Flat
Gasket Surface**



**4 Bolt, Groove
Diameters
2 25/32" x 2 1/16"**



**4 Bolt, Flat, Tongue,
Groove Diameters
2 3/4" x 2 3/16"**



**4 Bolt Gasket,
Asbestos-Free**

Flange with Flat Gasket Surface

Part Number	A (in)	B (in)	C (in)	D (in)	E (in)	F (in) Bolt Hole Centers	G (in)	H (in)	Dia Bolt Holes	Box Qty	Wt (lb)	Gasket
A 08624	1 1/8	1 1/16	0.75	1.56	3.41	2.50	1.25		17/32	1	1.925	A 08628
A 08625	1 3/8	1 19/64	0.75	1.63	3.41	2.50	1.25		17/32	1	1.875	A 08628
A 08626	1 5/8	1 17/32	0.75	1.75	3.41	2.50	1.25		17/32	1	1.725	A 08628
A 08627	2 1/8	1 15/16	0.75	1.72	3.41	2.50	1.25		17/32	1	1.473	A 08628

Flange with Groove Diameters 2 25/32" x 2 1/16"

Part Number	A (in)	B (in)	C (in)	D (in)	E (in)	F (in) Bolt Hole Centers	G (in)	H (in)	Dia Bolt Holes	Box Qty	Wt (lb)	Gasket
A 08630	1 1/8	1 1/16	0.75	1.56	3.41	2.50	1.25		17/32	1	1.805	A 08634
A 08631	1 3/8	1 19/64	0.75	1.63	3.41	2.50	1.25		17/32	1	1.750	A 08634
A 08261	1 5/8	1 17/32	0.75	1.75	3.41	2.50	1.25		17/32	1	1.640	A 08634
A 08633	2 1/8	1 15/16	0.75	1.72	3.41	2.50	1.25		17/32	1	1.417	A 08634

Flange with Tongue, Groove Diameters 2 3/4" x 2 3/16"

Part Number	A (in)	B (in)	C (in)	D (in)	E (in)	F (in) Bolt Hole Centers	G (in)	H (in)	Dia Bolt Holes	Box Qty	Wt (lb)	Gasket
A 08629	1 1/8	1 1/16	0.75	1.72	3.41	2.50	1.25		17/32	1	2.000	A 08634
A 05150	1 3/8	1 19/64	0.75	1.78	3.41	2.50	1.25		17/32	1	1.977	A 08634
A 05148	1 5/8	1 17/32	0.75	1.91	3.41	2.50	1.25		17/32	1	1.867	A 08634
A 08632	2 1/8	1 15/16	0.75	1.88	3.41	2.50	1.25		17/32	1	1.594	A 08634

Gasket, Asbestos-Free Material

Part Number	A (in)	B (in)	C (in)	D (in)	E (in)	F (in) Bolt Hole Centers	G (in)	H (in)	Dia Bolt Holes	Box Qty	Wt (lb)	Gasket
A 08628	2 1/16			0.03		2.50	1.25	3	9/16	N/A	0.012	A 08628