

Activated Core

- High acid adsorption
- Liquid or suction applications



High Capacity Core

- High drying capacity
- Liquid or suction applications



Charcoal Core

- Wax removal
- Liquid or suction applications



Suction Line Filter

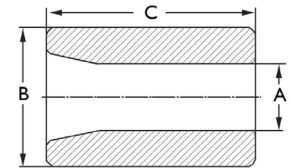
- Filter solid contaminants
- Low pressure drop
- Bi-directional



Activated Core

Part Number	Size Cu In	A (in)	B (in)	C (in)	Wt (lb)	Water Capacity (drops)											
						R134a		R404A		R507		R22		R407C		R410A	
						75°F	125°F	75°F	125°F	75°F	125°F	75°F	125°F	75°F	125°F	75°F	125°F
P 37266	48	1.77	3.70	5.51	1.78	587	466	605	462	534	384	534	384	397	263	358	194

Water capacity data rated according to AHRI 710 standards.



Charcoal Core

Part Number	Size Cu In	A (in)	B (in)	C (in)	Wt (lb)	Water Capacity (drops)											
						R134a		R404A		R507		R22		R407C		R410A	
						75°F	125°F	75°F	125°F	75°F	125°F	75°F	125°F	75°F	125°F	75°F	125°F
P 37267	48	1.77	3.70	5.51	1.68	533	414	551	414	497	347	497	347	364	231	339	186

Water capacity data rated according to AHRI 710 standards.

High Capacity Core

Part Number	Size Cu In	A (in)	B (in)	C (in)	Wt (lb)	Water Capacity (drops)											
						R134a		R404A		R507		R22		R407C		R410A	
						75°F	125°F	75°F	125°F	75°F	125°F	75°F	125°F	75°F	125°F	75°F	125°F
P 36818	48	1.77	3.70	5.51	1.68	1584	1402	1671	1517	1456	1276	1456	1276	1326	1012	1084	889
P 36818 (2)	96	1.77	3.70	5.51		3169	2798	3342	3034	2912	2552	2912	2552	2651	2024	2169	1778
P 36818 (3)	144	1.77	3.70	5.51		4753	4204	5014	4554	4368	3828	4368	3828	3977	3035	3254	2667
P 36818 (4)	192	1.77	3.70	5.51		6337	5606	6685	6068	5824	5104	5824	5104	5303	4047	4338	3553

Water capacity data rated according to AHRI 710 standards.

Suction Line Filter

Part Number	Size Cu In	A (in)	B (in)	C (in)	Wt (lb)	Filtration
						A 18733C

