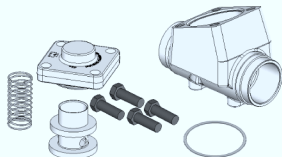




4-Bolt Check Valve INSTALLATION INSTRUCTIONS

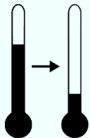
1 Disassemble valve and remove all internal components, ensuring they remain free of contaminants.



2 Install valve, wet wrapping the body, with arrow on body in the correct direction of refrigerant flow.

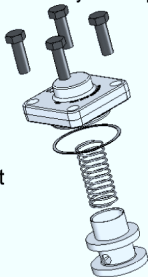


3 Allow body to cool to room temperature. **DO NOT QUENCH.**



4 Assemble by inserting seat sub-assembly and spring into bore.

Lightly coat gasket with refrigerant oil and install.



Place cap on body and tighten bolts to proper torque.

