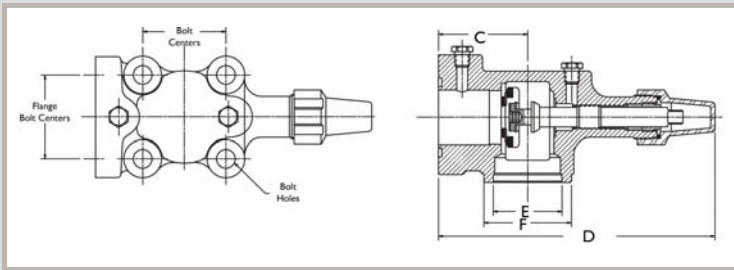




Features:

- Maximum abnormal pressure (MAP): 700 psig, 48 bar
- Continuous operating temperature (COT): -40°F/300°F, -40°C/149°C
- Compatible with all CFC, HCFC and HFC refrigerants and oils
- UL/cUL Recognized, Conforms to Pressure Equipment Directive 2014/68/EU
- 100% tested
- Asbestos-free valve packing
- Valve openings designed for maximum flow and minimum pressure drop



Valve Part Number	C		D		E		F		Bolt Centers		Bolt Hole Diameter		Pipe Plug Size in	Flange Bolt Centers		Seat Position	Valve Wt	
	in	mm	in	mm	in	mm	in	mm	in	mm	in	mm		in	mm		lb	kg
B 33793	3.28	83	10.17	258	2.53	64	3.22	82	3.06	78	.69	17	1/4	3.06	78	2-3 Turns off Front	12.78	5.80
B 33794	3.78	96	12.44	316	3.35	85	4.16	106	3.88	98	.69	17	1/4	3.88	98	2-3 Turns off Front	22.20	10.07
B 34183	2.69	68	8.22	209	2.12	54	2.75	70	2.5	64	.53	13	1/4	2.12	64		6.91	3.13
B 34715	3.78	96	13.00	330	3.35	85	4.16	106	3.88	98	.69	17	1/4	3.88	98	2-3 Turns off Front	22.80	10.34
B 34761	3.28	83	10.17	258	2.53	64	3.22	82	3.06	78	.69	17	1/4	3.06	78	Front	12.76	5.79
B 35049	3.28	83	10.12	257	2.53	64	3.22	82	3.06	78	.69	17	1/4	3.06	78	Front	12.97	5.88

Torque To Seal

Front Seat		Back Seat		Pack Gland		Pipe Plug		Plastic Cap		Steel Cap		Cast Iron Cap	
(ft-lb)	(N-m):	(ft-lb)	(N-m):	(ft-lb)	(N-m):			(ft-lb)	(N-m)	(ft-lb)	(N-m)	(ft-lb)	(N-m)
45 - 65	61 - 88	45 - 65	61 - 88				240 - 300		Hand Tight		Hand Tight		Hand Tight

References

Valve Part Number	Body Number	Standard Seal Cap				Replacement Seal Cap			Replacement Kit*
		Material	Seal Cap	O-Ring	Kit**	Plastic **	Steel	Cast Iron **	
B 33793	A 06201	Plastic	N 02849	P 34712	A 17668	A 17668			A 17422
B 33794	A 06203	Cast Iron	A 06251P	P 35589	A 17907			A 17907	A 17422
B 34183	C 35634	Plastic	N 02848	P 34711	A 17667	A 17667			
B 34715	C 36126	Steel	P 36128	P 35589				A 17907	
B 34761	A 06201	Plastic	N 02849	P 34712	A 17668	A 17668		B 33816	
B 35049	C 35815	Plastic	N 02849	P 34712	A 17668	A 17668			

* Replacement kit contains components to pack s

** Seal cap and o-ring kit