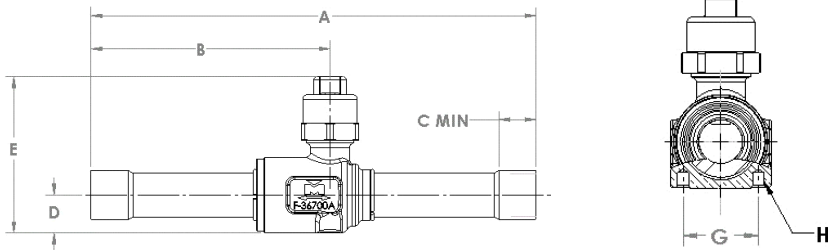




Features:

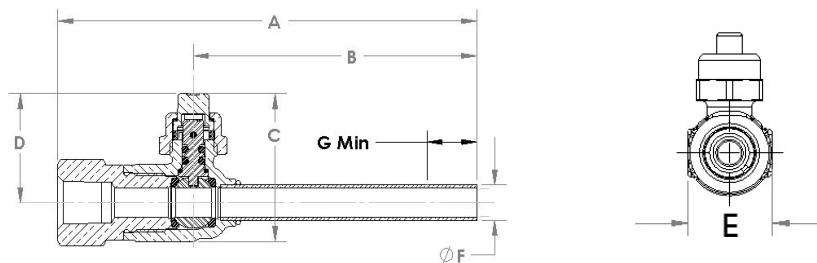
- Design Pressure (DP) / Maximum abnormal pressure (MAP): 870 psig, 60 bar
- Continuous operating temperature (COT): -40°F/300°F, -40°C/149°C
- Designed for subcritical CO₂ systems
- Bi-directional flow
- Brass body with copper-iron alloy connections
- Full port construction to match line size
- Rupture-proof, internally-loaded stem
- Specially selected o-ring material compatible for CO₂ operating conditions
- UL/cUL Listed, Conforms to EU Pressure Equipment Directive and UK Pressure Equipment Regulation

Solder Connections



Part Number	Size		Cv	Kv	A		B		C Min		D		E		G **		H **	Port (in)	Wt		Seal Cap Kit
	in	mm			in	mm	in	mm	in	mm	in	mm	in	mm	in	mm			lb	kg	
AP17859HP	1/4	6	1.0	1	5.50	140	2.98	76	0.31	8	0.54	14	2.23	57	0.87	22	M4 X 0.7	0.50	0.67	0.30	A 17842
AP17860HP	3/8	10	4.3	4	5.50	140	2.98	76	0.31	8	0.54	14	2.23	57	0.87	22	M4 X 0.7	0.50	0.48	0.22	A 17842
AP17861HP	1/2	13	6.2	5	6.35	161	3.41	87	0.38	10	0.54	14	2.23	57	0.87	22	M4 X 0.7	0.50	0.53	0.24	A 17842
AP17862HP	5/8	17	12.1	10	6.35	161	3.41	87	0.50	13	0.54	14	2.23	57	0.87	22	M4 X 0.7	0.50	0.50	0.23	A 17842
AP17863HP	3/4	19	19.0	16	7.45	189	3.89	99	0.62	16	0.72	18	2.66	68	1.18	30	M4 X 0.7	0.75	1.40	0.64	A 17843
AP17864HP	7/8	22	27.5	24	7.45	189	3.89	99	0.75	19	0.72	18	2.66	68	1.18	30	M4 X 0.7	0.75	0.93	0.42	A 17843
AP17865HP	1 1/8	29	54.0	47	8.41	214	4.21	107	0.91	23	1.00	25	3.15	80	1.50	38	M4 X 0.7	1.00	1.62	0.73	A 17843

NPTFI X ODE Connections



Part Number	Size		Cv	Kv	A		B		C Min		D		E		G **		Wt	Seal Cap Kit	
	in	mm			in	mm	in	mm	in	mm	in	mm	in	mm	lb	kg			
A 18675HP	1/4	6	0.0	0	4.38	111	2.97	75	1.54	39	1.14	29	0.81	21	0.38	10	0.29	0.13	A 17841

** Where Applicable